



BULLETIN No: 1



ISSUED BY CLERK OF THE COURSE

DATE: Thursday 12 May 2021

TIME: 20:00

TO: All Competitors

FROM: Clerk of the Course

No of pages: 2 Attachments: 1

1. BUNBURY SUPER SPECIAL STAGES

Note: Clubman Cup Crews DO Compete on the Bunbury Super Special Stage

(i) Amended Program

Friday	21 May 2021		
	1500-1600hrs	Scrutiny Re-Presents	Bunbury Speedway Pits
	1600-1700 hrs	Reconnaissance Bunbury Super Stage	Bunbury Speedway & Autocross
	1715 hrs	Drivers Briefing	Bunbury Speedway Club Rooms
	1730 hrs	Top 5 Ballot Start Order	Bunbury Speedway Clubrooms
	1755 hrs	1 st Two cars on Stage Start	Bunbury Speedway & Autocross
	1800 hrs	Start of Heat 1 Section 1	Bunbury Speedway & Autocross
	2030 hrs	End of Heat 1 Section 1	Bunbury Speedway & Autocross

(ii) All cars, including Clubman are required to do at least one sighting lap of the Bunbury Super Special Stage. Competitors may use their rally cars with rally tyres but are restricted to a 20kmh max speed.

(iii) The Super Special Stage is designed to have two cars running concurrently – one starting from a LH Start and the other car from the RH Start. Each of the LH and RH versions has a separate Flying Finish.

Over the 4 runs of the stage – each car will be given two starts from LH and two from RH. This will be managed by Officials who will place a sticker on the car windscreen denoting if LH or RH start. Crews must leave the stickers on the windscreen until competition for Friday is complete.

(iv) **Crews will pass through one of the Flying Finish locations midway through each stage, so care should be taken by crews to ensure they complete the stage distance as per Road Book.**

(v) Each car will be timed on this Stage by electronic means. RallySafe timing will be the primary timing system with MSTaLR as back up and will be used if required. Times will be available on the Event Website and crews are to fill in their own Time Cards.

(vi) Only the Special Stage elapsed, or Maximum times will be calculated for the results. Except for TC1, crews will not need to check into Time Controls. Crews unable to report to the Holding Area out control in the correct order (as per Start List) will be allocated a maximum time for that run.

(vii) Drivers are to start on a Green Light. The traffic light sequence is

3 seconds Red (Wait) – Red Light will come on when previous cars pass the Start Line

3 seconds Amber (Ready)

0 Green (Go)

The driver should "go on green" but their time doesn't start until they break the beam.



(viii) After going through the Flying Finish, the car on the Right Hand finish track must stop and allow the Left Hand Track to go through to the Stop first.

(ix) If a red flag or red light is displayed at any location on the Super Special Stage, a driver must immediately make a significant reduction in speed. The Clerk of the Course may allow a vehicle affected by the display of the by the flag or light to contest the Special Stage again. If circumstances do not permit this, the Clerk of the Course will propose to the Stewards an allocated time for the crew on the Special Stage. No crew which is totally or partially responsible for the displaying of the flag/light may benefit from this measure.

(x) Any crew failing to complete the Super Special Stage in the correct manner described in the Supplementary Regulations and the Road Book will be allocated a time for the Stage, equal to the fastest time plus 1 minute (called the "Maximum Time"). Any crew recording an actual time in excess of this time on the Stage will be allocated the Maximum Time.

(xi) A vehicle which fails to complete the Super Special Stage within 3 minutes may be removed by the Organisers and placed in the Holding Area immediately after the end of the Stage. The crew will then be allowed to work on their car but must still report to the Holding Area Out Control in the correct order (as per Start List) for their next run. Failure to do so will result in the application of a Maximum time for that run of the stage.

(xii) All Flag marshals at the Super Special Stage will be deemed to be Judges Of Fact for the purposes of determining if the crews have completed the Stage in the correct manner. Crews who short cut the Stage, which includes not running on the Speedway Track will be report to the Stewards for a Penalty to be imposed.

(xiii) Crews are forbidden from overtaking another moving car during any of the Super Special Stages. If a crew is in a position to overtake another car they must slow down and proceed to the Stop Control. Under no circumstances are they to pass another vehicle unless that vehicle is definitely stopped. Crews affected by this situation may be allowed to contest the Special Stage again as per Article (vii).

(xiv) If at the conclusion of Bunbury Super 2, Bunbury Super 4 is not going to Sart before 2045 due to delays, then Bunbury Super 3 and Bunbury Super 4 will be cancelled.

2. **SCRUTINY**

The following cars will be required to attend pre-event scrutiny, all other vehicles are required to provide self-scrutiny checklist and statement of vehicle compliance as per Motorsport Australia requirements.

4
19
21
28
35
47
49
59
62
68
69
73
92

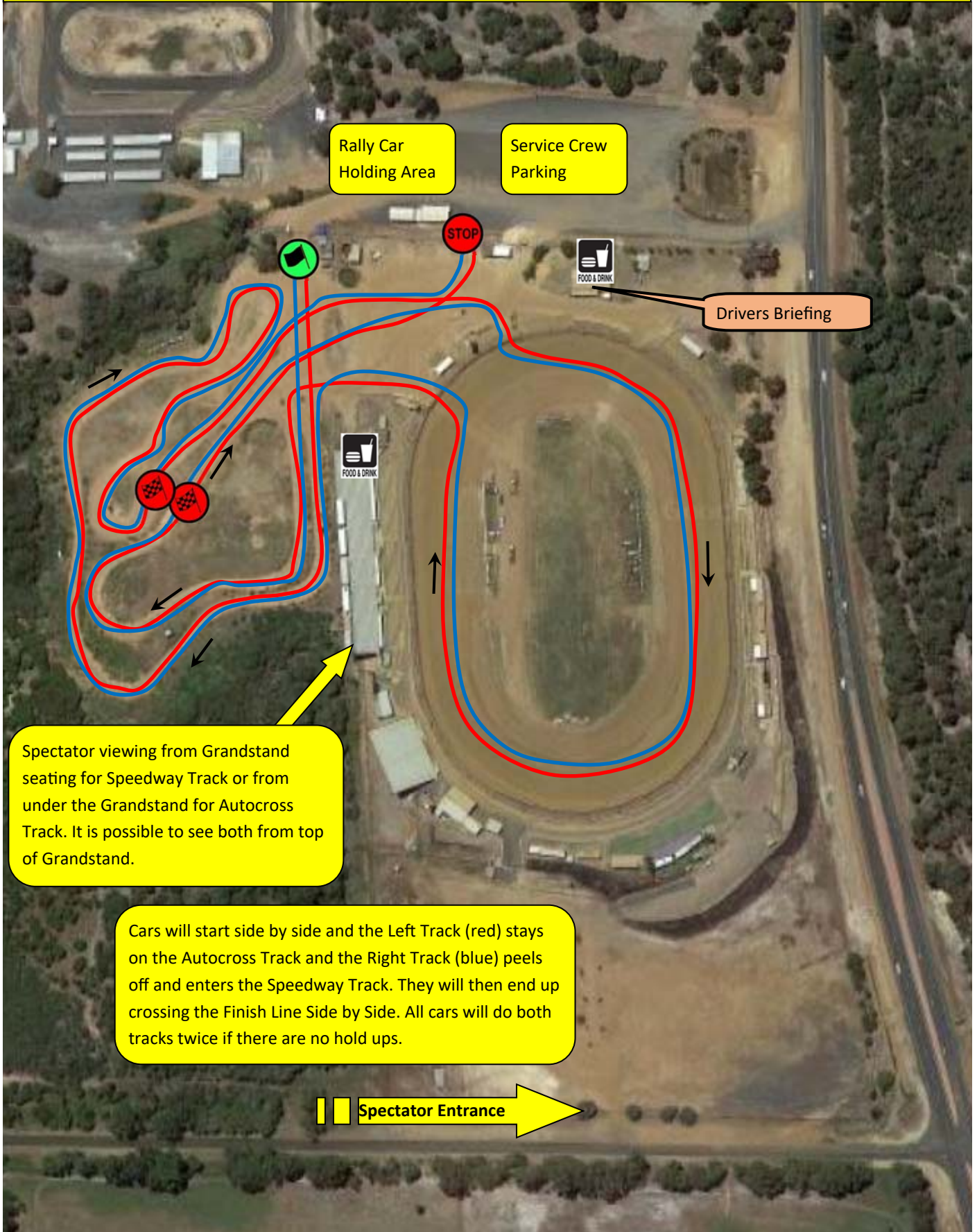


Ross Tapper
Clerk of the Course



BUNBURY SPEEDWAY & AUTOCROSS SPECIAL STAGES

FRIDAY 21st MAY 6.00PM TO 9.00PM



Rally Car
Holding Area

Service Crew
Parking

STOP

FOOD & DRINK

Drivers Briefing

FOOD & DRINK

Spectator viewing from Grandstand seating for Speedway Track or from under the Grandstand for Autocross Track. It is possible to see both from top of Grandstand.

Cars will start side by side and the Left Track (red) stays on the Autocross Track and the Right Track (blue) peels off and enters the Speedway Track. They will then end up crossing the Finish Line Side by Side. All cars will do both tracks twice if there are no hold ups.

Spectator Entrance